

# Hydraulic Truck Pump

## Catalog 2021

# High Pressure Single Vane Pump HT6GC/HT67GB Series (Truck Pump)

## Specification

### HT6GC for Single pump

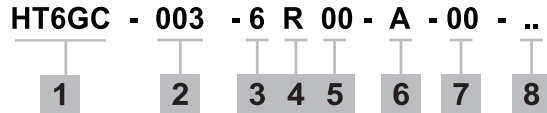
Size	Displacement cm <sup>3</sup> /r 1(in <sup>3</sup> /r)	Max. Intermittent Pressure bar (psi)	Max. Continuous Pressure bar (psi)	Min. Speed rpm	Max. Speed rpm	Weight
003	10.8 (0.66)	275 (4000)	240 (3500)	600	2800	17.5 (38.5)
005	17.2 (1.05)					
006	21.3 (1.30)					
008	26.4 (1.61)					
010	34.1 (2.08)					
012	37.1 (2.26)					
014	46.0 (2.81)					
017	58.3 (3.56)					
020	63.8 (3.89)					
022	70.3 (4.29)					
025	79.3 (4.84)	206 (3000)	160 (2300)		2500	
028	88.8 (5.42)					
031	100.0 (6.10)					

### HT67GB for Single pump

Size	Displacement cm <sup>3</sup> /r 1(in <sup>3</sup> /r)	Max. Intermittent Pressure bar (psi)	Max. Continuous Pressure bar (psi)	Min. Speed rpm	Max. Speed rpm	Weight
002	5.8 (0.35)	320 (4640)	290 (4200)	600	3600	17.5 (38.5)
003	9.8 (0.59)					
004	12.8 (0.78)					
005	15.9 (0.97)					
006	19.8 (1.20)					
007	22.5 (1.37)					
008	24.9 (1.51)					
009	28.0 (1.70)					
010	31.8 (1.94)					
011	35.0 (2.13)					
012	41.0 (2.50)					
014	45.0 (2.74)					
015	50.0 (3.05)					

# High Pressure Single Vane Pump HT6GC/HT67GB Series (Truck Pump)

## Ordering Code



1. Model :

Truck Pump - HT6GC, HT67GB  
ISO 4 bolts - 7653 (R17-102)

7. Port Connection (4 bolts SAE flange J518C)

01 - UNC Port Connection  
M1 - Metric Port Connection

2. Displacement

Volumetric displacement cm<sup>3</sup>/rec (in<sup>3</sup>/rev)

6C	7B
003 - 10.8 (0.66)	002 - 5.8 (0.35)
005 - 17.2 (1.05)	003 - 9.8 (0.60)
006 - 21.3 (1.30)	004 - 12.8 (0.78)
008 - 26.4 (1.61)	005 - 15.9 (0.97)
010 - 34.1 (2.08)	006 - 19.8 (1.20)
012 - 37.1 (2.26)	007 - 22.5 (1.37)
014 - 46.0 (2.81)	008 - 24.9 (1.51)
017 - 58.3 (3.56)	010 - 31.8 (1.92)
020 - 63.8 (3.89)	012 - 41.0 (2.47)
022 - 70.3 (4.29)	015 - 50.0 (3.01)
025 - 79.3 (4.84)	
028 - 88.8 (5.42)	
031 - 100.0 (6.10)	

	UNC		Metric	
Code	00	01	M0	M1
S = 1.½"	SAE	SAE	SAE	SAE
P = 1	BSPP	SAE	BSPP	SAE

8. Modifications

3. Type of shaft

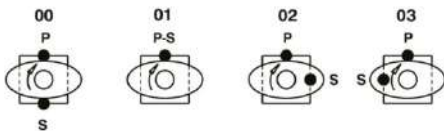
6 - DIN 5462 Splined Shaft

4. Direction of rotation (view on shaft end)

R - Turn right  
L - Turn left

5. Porting combination (see page Porting Diagrams)

00 - standard



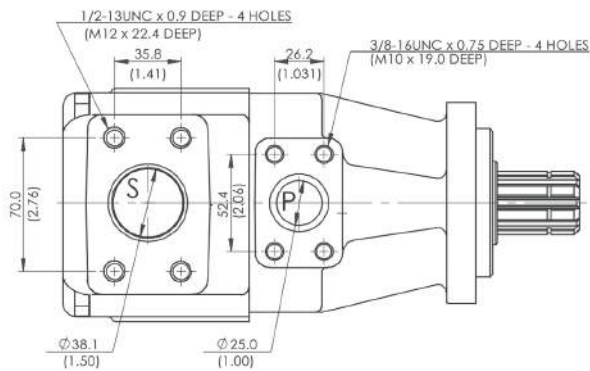
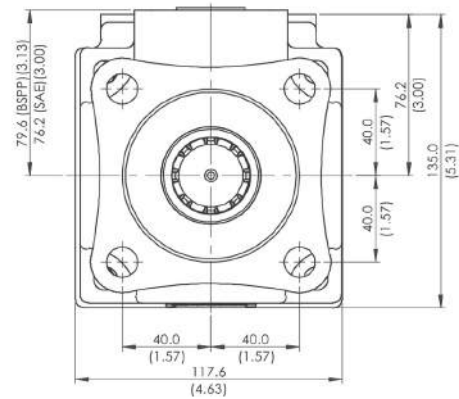
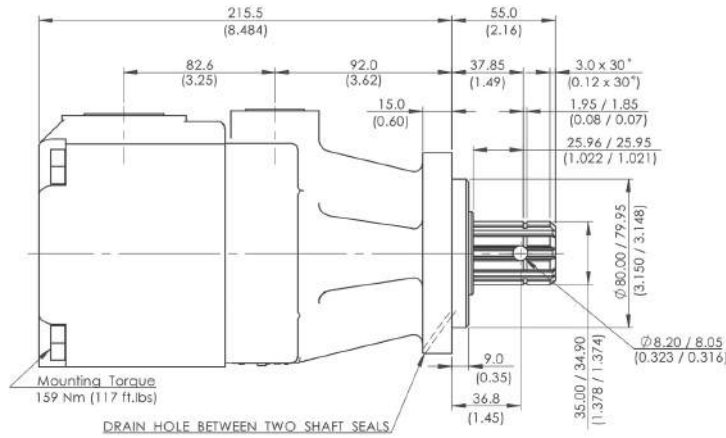
S - Suction port    P - Pressure port

6. Design letter

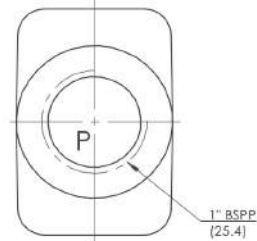
# High Pressure Single Vane Pump HT6GC/HT67GB Series (Truck Pump)

## Installation Dimension mm (inch)

### HT6GC, HT67GB



CODE 00



# High Pressure Single Vane Pump HT6GC/HT67GB Series (Truck Pump)

## Performance Characteristics

### HT6GC

OPERATING CHARACTERISTICS - TYPICAL [115 SUS]

Series	Volumetric Displacement	Speed n [R.P.M]	Flow Q [GPM]			Input power P [HP]		
			p = 0 PSI	p = 2000 PSI	p = 3500 PSI	p = 100 PSI	p = 2000 PSI	p = 3500 PSI
003	0.66 in <sup>3</sup> /rev	1200	3.42	-	-	1.43	-	-
		1800	5.14	3.61	-	2.11	8.45	-
005	1.05 in <sup>3</sup> /rev	1200	5.45	3.99	-	1.55	8.17	-
		1800	8.18	6.65	5.56	2.29	12.00	19.59
006	1.30 in <sup>3</sup> /rev	1200	6.75	5.22	4.13	1.62	9.69	16.13
		1800	10.13	8.60	7.51	2.40	14.28	23.57
008	1.61 in <sup>3</sup> /rev	1200	8.37	6.84	5.75	1.72	11.58	19.43
		1800	12.55	11.02	9.93	2.54	17.11	28.53
010	2.08 in <sup>3</sup> /rev	1200	10.81	9.28	8.19	1.86	14.43	24.42
		1800	16.22	14.69	13.60	2.76	21.38	36.00
012	2.26 in <sup>3</sup> /rev	1200	11.76	10.23	9.14	1.92	15.53	26.36
		1800	17.64	16.11	15.02	2.84	23.05	38.92
014	2.81 in <sup>3</sup> /rev	1200	14.58	13.05	11.96	2.08	18.83	32.12
		1800	21.88	20.35	19.26	3.09	27.99	47.56
017	3.56 in <sup>3</sup> /rev	1200	18.48	16.95	15.86	2.31	23.38	40.08
		1800	27.73	26.20	25.11	3.43	34.81	59.51
020	3.89 in <sup>3</sup> /rev	1200	20.23	18.70	17.61	2.41	25.41	43.64
		1800	30.34	28.81	27.42	3.58	37.86	64.85
022	4.29 in <sup>3</sup> /rev	1200	22.29	20.76	19.67	2.53	27.82	47.85
		1800	33.43	31.90	30.81	3.76	41.47	71.16
025 <sup>1)</sup>	4.84 in <sup>3</sup> /rev	1200	25.14	23.61	22.52	2.70	31.15	53.68
		1800	37.71	36.18	35.09	4.01	46.46	79.90
028 <sup>1)</sup>	5.42 in <sup>3</sup> /rev	1200	28.15	26.62	25.86 <sup>2)</sup>	2.87	34.66	51.37 <sup>2)</sup>
		1800	42.23	40.70	39.94 <sup>2)</sup>	4.27	51.74	76.73 <sup>2)</sup>
031 <sup>1)</sup>	6.10 in <sup>3</sup> /rev	1200	31.70	30.17	29.41 <sup>2)</sup>	3.08	38.80	57.58 <sup>2)</sup>
		1800	47.56	46.03	45.27 <sup>2)</sup>	4.58	57.95	86.06 <sup>2)</sup>

1) 25 - 28 - 31 = 2500 R.P.M. max.      2) 28 - 31 = 3000 PSI max. int.  
 - Not to use because internal leakage greater than 50% theoretical flow.  
 - Port connection can be furnished with metric threads.

# High Pressure Single Vane Pump HT6GC/HT67GB Series (Truck Pump)

## HT67GB

### OPERATING CHARACTERISTICS - TYPICAL [115 SUS]

Series	Volumetric Displacement	Flow Q {GPM} & n = 1500 RPM			Input power P {HP} & n = 1500 RPM		
		p = 0 PSI	p = 2000 PSI	p = 4650 PSI	p = 0 PSI	p = 2000 PSI	p = 4650 PSI
003	0.59 in <sup>3</sup> /rev	3.88	3.43	2.85	0.80	5.36	11.52
004	0.78 in <sup>3</sup> /rev	5.07	4.62	4.04	0.80	6.70	14.74
005	0.97 in <sup>3</sup> /rev	6.31	5.86	5.28	0.93	8.17	18.09
006	1.20 in <sup>3</sup> /rev	7.84	7.39	6.81	0.93	10.05	22.25
007	1.37 in <sup>3</sup> /rev	8.90	8.45	7.89	1.07	11.39	25.20
008	1.51 in <sup>3</sup> /rev	9.88	9.43	8.84	1.07	12.46	27.74
009	1.70 in <sup>3</sup> /rev	11.09	10.56	10.06	1.20	13.94	31.09
010	1.94 in <sup>3</sup> /rev	12.60	12.15	11.57	1.20	15.68	35.12
011	2.13 in <sup>3</sup> /rev	13.86	13.41	12.91 <sup>1)</sup>	1.34	17.15	36.19 <sup>1)</sup>
012	2.50 in <sup>3</sup> /rev	16.24	15.79	15.29 <sup>1)</sup>	1.47	19.97	42.22 <sup>1)</sup>
014	2.74 in <sup>3</sup> /rev	17.83	17.38	16.88 <sup>1)</sup>	1.60	21.84	46.24 <sup>1)</sup>
015	3.05 in <sup>3</sup> /rev	19.81	19.36	18.91 <sup>2)</sup>	1.74	24.26	47.85 <sup>2)</sup>

1) 11 - 12 - 14 = 4350 PSI max. int.      2) 15 = 4000 PSI max. int.  
 - Not to use because internal leakage greater than 50% theoretical flow.  
 - Port connection can be furnished with metric threads.

# High Pressure Double Vane Pump HT6GCC Series (Truck Pump)

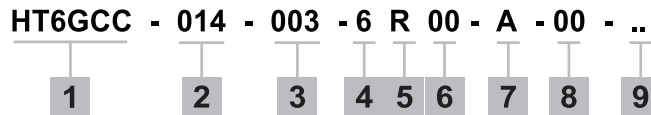
## Specification

### HT6GCC for Double pump

Shaft End Pump				Cover End Pump				Max. speed rpm	Weight kg (lb)
Size	Displacement cm <sup>3</sup> /r 1(in <sup>3</sup> /r)	Max. Intermittent Pressure bar (psi)	Max. Continuous Pressure bar (psi)	Size	Displacement cm <sup>3</sup> /r 1(in <sup>3</sup> /r)	Max. Intermittent Pressure bar (psi)	Max. Continuous Pressure bar (psi)		
003	10.8 (0.66)	280 (4000)	240 (3500)	003	10.8 (0.66)	280 (4000)	240 (3500)	2800	28.0 (61.6)
005	17.2 (1.05)			005	17.2 (1.05)				
006	21.3 (1.30)			006	21.3 (1.30)				
008	26.4 (1.61)			008	26.4 (1.61)				
010	34.1 (2.08)			010	34.1 (2.08)				
012	37.1 (2.26)			012	37.1 (2.26)				
014	46.0 (2.81)			014	46.0 (2.81)				
017	58.3 (3.56)			017	58.3 (3.56)				
020	63.8 (3.89)			020	63.8 (3.89)				
022	70.3 (4.29)			022	70.3 (4.29)				
025	79.3 (4.84)	210 (3000)	160 (2300)	025	79.3 (4.84)	210 (3000)	160 (2300)	2500	
028	88.8 (5.42)			028	88.8 (5.42)				
031	100.0 (6.10)			031	100.0 (6.10)				

# High Pressure Double Vane Pump HT6GCC Series (Truck Pump)

## Ordering Code



1. Model :  
 Truck Pump - HT6GCC  
 ISO 4 bolts - 7653 (R17-102)

2. Displacement P1  
 Volumetric displacement cm<sup>3</sup>/rec (in<sup>3</sup>/rev)

- 003 - 10.8 (0.66)
- 005 - 17.2 (1.05)
- 006 - 21.3 (1.30)
- 008 - 26.4 (1.61)
- 010 - 34.1 (2.08)
- 012 - 37.1 (2.26)
- 014 - 46.0 (2.81)
- 017 - 58.3 (3.56)
- 020 - 63.8 (3.89)
- 022 - 70.3 (4.29)
- 025 - 79.3 (4.84)
- 028 - 88.8 (5.42)
- 031 - 100.0 (6.10)

3. Displacement P2  
 Volumetric displacement cm<sup>3</sup>/rec (in<sup>3</sup>/rev)

- 003 - 10.8 (0.66)
- 005 - 17.2 (1.05)
- 006 - 21.3 (1.30)
- 008 - 26.4 (1.61)
- 010 - 34.1 (2.08)
- 012 - 37.1 (2.26)
- 014 - 46.0 (2.81)
- 017 - 58.3 (3.56)
- 020 - 63.8 (3.89)
- 022 - 70.3 (4.29)
- 025 - 79.3 (4.84)
- 028 - 88.8 (5.42)
- 031 - 100.0 (6.10)

4. Type of shaft  
 6 - DIN 5462 Splined Shaft

5. Direction of rotation (view on shaft end)  
 R - Turn right  
 L - Turn left

6. Porting combination (see page Porting Diagrams)  
 00 - standard

7. Design letter

8. Port Connection (4 bolts SAE flange J518C)  
 00 - UNC Port Connection  
 M0 - Metric Port Connection

Code		4 bolt SAE flanges		
UNC	Metric	P1	P2	S
00	0M	1"	1"	3"
01	M0	1"	3/4"	3"
10	1M	1"	1"	2½"
11	M1	1"	3/4"	2½"

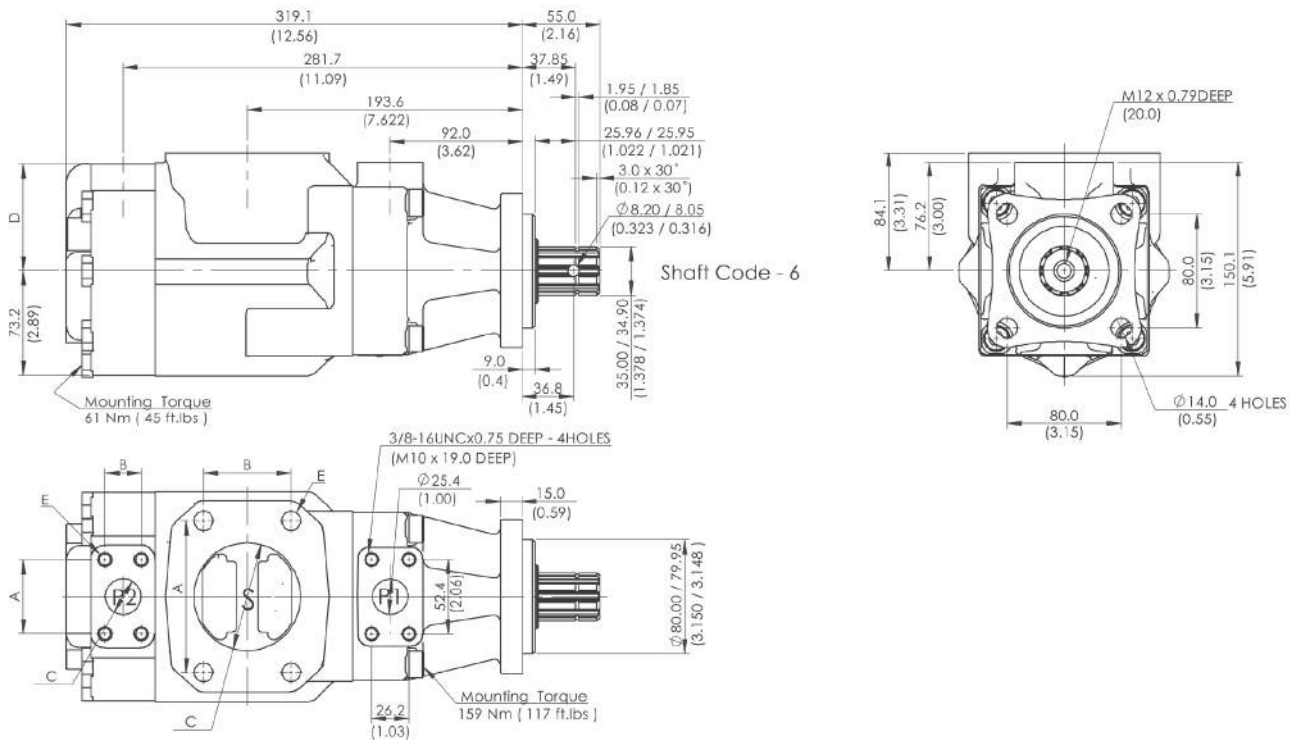
1) for 46 ml/rev max.  
 2) for 126 ml/rev max.  
 always select the largest cartridge in the front place. (see page Hose Size Selection Nomograph)

10. Modifications



# High Pressure Double Vane Pump HT6GCC Series (Truck Pump)

## Installation Dimension mm (inch)



Port	A	B	C	D	E
S	106.4 (4.19)	61.9 (2.44)	$\phi 76.2$ (3.00)	-	5/8" - 11 UNC x 1.12 DEEP (M16 x 28.4 DEEP)
S	88.9 (3.50)	50.8 (2.00)	$\phi 63.5$ (2.50)	-	1/2" - 13 UNC x 0.94 DEEP (M12 x 24.0 DEEP)
P2	47.7 (1.88)	22.2 (0.88)	$\phi 19.0$ (0.75)	76.2 (3.00)	3/8" - 16 UNC x 0.75 DEEP (M10 x 19.0 DEEP)
P2	52.4 (2.06)	26.2 (1.03)	$\phi 25.4$ (1.00)	74.7 (3.94)	

# High Pressure Double Vane Pump HT6GCC Series (Truck Pump)

## Performance Characteristics

### OPERATING CHARACTERISTICS - TYPICAL [115 SUS]

Pressure port	Series	Volumetric Displacement	Flow Q {GPM} & n = 1800 RPM			Input power P {HP} & n = 1800 RPM		
			p = 0 PSI	p = 2000 PSI	p = 3500 PSI	p = 0 PSI	p = 2000 PSI	p = 3500 PSI
P1 & P2	003	0.66 in <sup>3</sup> /rev	5.14	3.61	-	2.11	8.45	-
	005	1.05 in <sup>3</sup> /rev	8.18	6.65	5.56	2.29	12.00	19.59
	006	1.30 in <sup>3</sup> /rev	10.13	8.60	7.51	2.40	14.28	23.57
	008	1.61 in <sup>3</sup> /rev	12.55	11.02	9.93	2.54	17.11	28.53
	010	2.08 in <sup>3</sup> /rev	16.22	14.69	13.60	2.76	21.38	36.00
	012	2.26 in <sup>3</sup> /rev	17.64	16.11	15.02	2.84	23.05	38.92
	014	2.81 in <sup>3</sup> /rev	21.88	20.35	19.26	3.09	27.99	47.56
	017	3.56 in <sup>3</sup> /rev	27.73	26.20	25.11	3.43	34.81	59.51
	020	3.89 in <sup>3</sup> /rev	30.34	28.81	27.42	3.58	37.86	64.85
	022	4.29 in <sup>3</sup> /rev	33.43	31.90	30.81	3.76	41.47	71.16
	025 <sup>1)</sup>	4.84 in <sup>3</sup> /rev	37.71	36.18	35.09	4.01	46.46	79.90
	028 <sup>1)</sup>	5.42 in <sup>3</sup> /rev	42.23	40.70	39.94 <sup>2)</sup>	4.27	51.74	76.73 <sup>2)</sup>
	031	6.10 in <sup>3</sup> /rev	47.56	46.03	45.27 <sup>2)</sup>	4.58	57.95	86.06 <sup>2)</sup>

1) 025 - 028 - 031 = 2500 R.P.M. max. 2) 028 - 031 = 2200 PSI max. int.  
 - Not to use because internal leakage greater than 50% theoretical flow.  
 - Port connection can be furnished with metric threads.

# High Pressure Double Vane Pump HT6CCZ Series (Truck Pump)

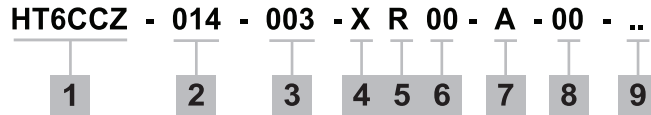
## Specification

### HT6CCZ for Double pump

Shaft End Pump				Cover End Pump				Max. speed rpm	Weight kg (lb)
Size	Displacement cm <sup>3</sup> /r 1(in <sup>3</sup> /r)	Max. Intermittent Pressure bar (psi)	Max. Continuous Pressure bar (psi)	Size	Displacement cm <sup>3</sup> /r 1(in <sup>3</sup> /r)	Max. Intermittent Pressure bar (psi)	Max. Continuous Pressure bar (psi)		
003	10.8 (0.66)	280 (4000)	240 (3500)	003	10.8 (0.66)	280 (4000)	240 (3500)	2800	27.0 (59.4)
005	17.2 (1.05)			005	17.2 (1.05)				
006	21.3 (1.30)			006	21.3 (1.30)				
008	26.4 (1.61)			008	26.4 (1.61)				
010	34.1 (2.08)			010	34.1 (2.08)				
012	37.1 (2.26)			012	37.1 (2.26)				
014	46.0 (2.81)			014	46.0 (2.81)				
017	58.3 (3.56)			017	58.3 (3.56)				
020	63.8 (3.89)			020	63.8 (3.89)				
022	70.3 (4.29)			022	70.3 (4.29)				
025	79.3 (4.84)			025	79.3 (4.84)				
028	88.8 (5.42)	210 (3000)	160 (2300)	028	88.8 (5.42)	210 (3000)	160 (2300)	2500	
031	100.0 (6.10)			031	100.0 (6.10)				

# High Pressure Double Vane Pump HT6CCZ Series (Truck Pump)

## Ordering Code



1. Model :

Truck Pump - HT6CCZ  
SAE B 2 bolts mounting flange J744

2. Displacement P1

Volumetric displacement cm<sup>3</sup>/rec (in<sup>3</sup>/rev)

- 003 - 10.8 (0.66)
- 005 - 17.2 (1.05)
- 006 - 21.3 (1.30)
- 008 - 26.4 (1.61)
- 010 - 34.1 (2.08)
- 012 - 37.1 (2.26)
- 014 - 46.0 (2.81)
- 017 - 58.3 (3.56)
- 020 - 63.8 (3.89)
- 022 - 70.3 (4.29)
- 025 - 79.3 (4.84)
- 028 - 88.8 (5.42)
- 031 - 100.0 (6.10)

3. Displacement P2

Volumetric displacement cm<sup>3</sup>/rec (in<sup>3</sup>/rev)

- 003 - 10.8 (0.66)
- 005 - 17.2 (1.05)
- 006 - 21.3 (1.30)
- 008 - 26.4 (1.61)
- 010 - 34.1 (2.08)
- 012 - 37.1 (2.26)
- 014 - 46.0 (2.81)
- 017 - 58.3 (3.56)
- 020 - 63.8 (3.89)
- 022 - 70.3 (4.29)
- 025 - 79.3 (4.84)
- 028 - 88.8 (5.42)
- 031 - 100.0 (6.10)

4. Type of shaft

- X - Special Keyed Shaft
- W - Special Keyed Shaft
- V - Special Keyed Shaft
- S - DIN 5462 Keyed Shaft

5. Direction of rotation (view on shaft end)

- R - Turn right
- L - Turn left

6. Porting combination (see page Porting Diagrams)

- 00 - standard

7. Design letter

8. Port Connection (4 bolts SAE flange J518C)

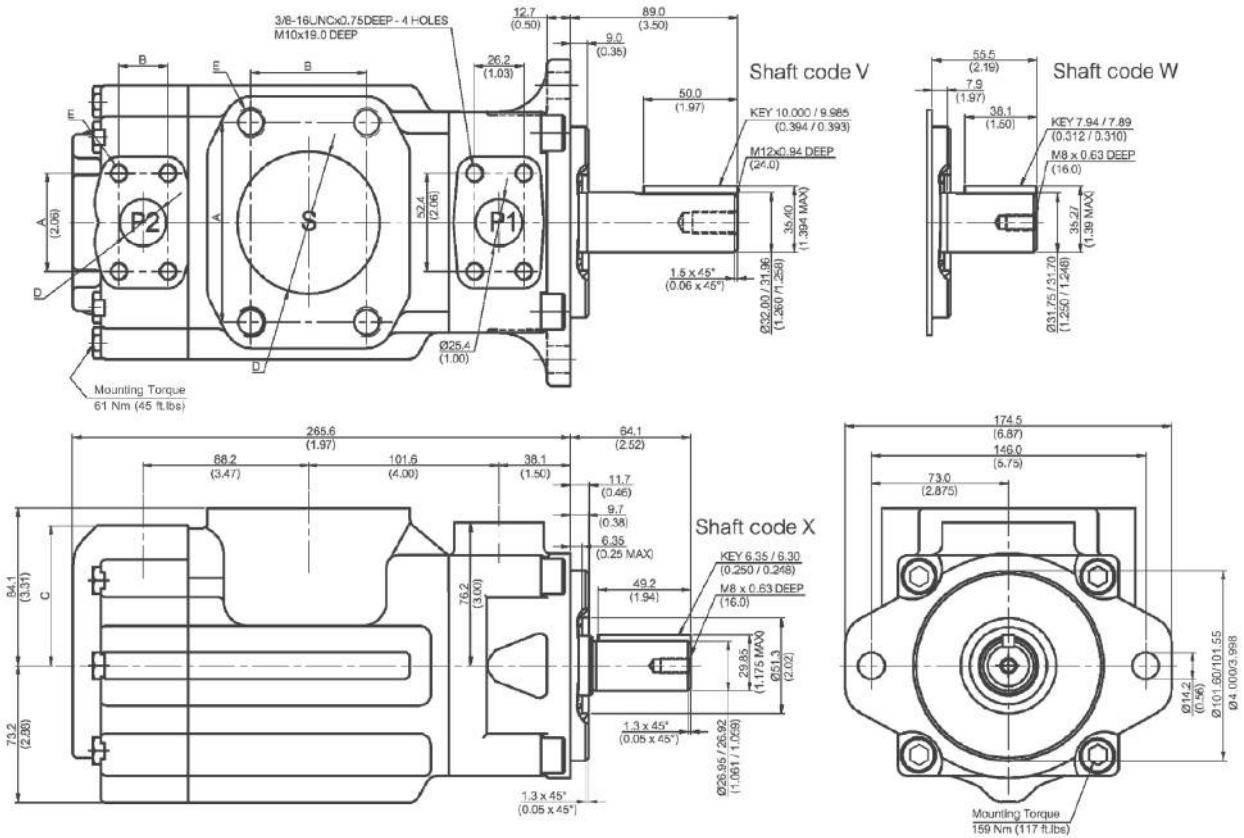
- 00 - UNC Port Connection
- M0 - Metric Port Connection

Code		4 bolt SAE flanges		
UNC	Metric	P1	P2	S
00	0M	1"	1"	3"
01	M0	1"	3/4"	3"
10	1M	1"	1"	2½"
11	M1	1"	3/4"	2½"

10. Modifications

# High Pressure Double Vane Pump HT6CCZ Series (Truck Pump)

## Installation Dimension mm (inch)



Port	A	B	C	D	E
S	406.4 (4.19)	61.9 (2.44)	-	Ø 76.2 (3.00)	5/8" - 11 UNC x 1.12 DEEP (M16 x 28.4 DEEP)
S	88.9 (3.50)	50.8 (2.00)	-	Ø 63.5 (2.50)	1/2" - 13 UNC x 0.94 DEEP (M12 x 24.0 DEEP)
P2	47.6 (1.874)	22.2 (0.874)	76.2 (3.00)	Ø 19.0 (0.75)	3/8" - 16 UNC x 0.75 DEEP (M10 x 19.0 DEEP)
P2	52.4 (2.06)	26.2 (1.03)	74.7 (2.94)	Ø 25.4 (1.00)	

# High Pressure Double Vane Pump HT6CCZ Series (Truck Pump)

## Performance Characteristics

OPERATING CHARACTERISTICS - TYPICAL [115 SUS]

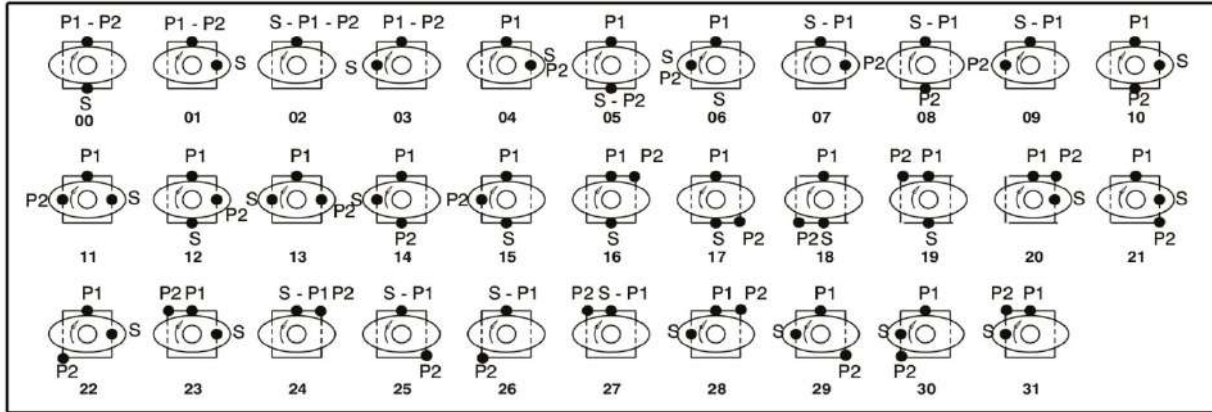
Pressure port	Series	Volumetric Displacement	Flow Q {GPM} & n = 1800 RPM			Input power P {HP} & n = 1800 RPM		
			p = 0 PSI	p = 2000 PSI	p = 3500 PSI	p = 0 PSI	p = 2000 PSI	p = 3500 PSI
P1 & P2	003	0.66 in <sup>3</sup> /rev	5.14	3.61	-	2.11	8.45	-
	005	1.05 in <sup>3</sup> /rev	8.18	6.65	5.56	2.29	12.00	19.59
	006	1.30 in <sup>3</sup> /rev	10.13	8.60	7.51	2.40	14.28	23.57
	008	1.61 in <sup>3</sup> /rev	12.55	11.02	9.93	2.54	17.11	28.53
	010	2.08 in <sup>3</sup> /rev	16.22	14.69	13.60	2.76	21.38	36.00
	012	2.26 in <sup>3</sup> /rev	17.64	16.11	15.02	2.84	23.05	38.92
	014	2.81 in <sup>3</sup> /rev	21.88	20.35	19.26	3.09	27.99	47.56
	017	3.56 in <sup>3</sup> /rev	27.73	26.20	25.11	3.43	34.81	59.51
	020	3.89 in <sup>3</sup> /rev	30.34	28.81	27.42	3.58	37.86	64.85
	022	4.29 in <sup>3</sup> /rev	33.43	31.90	30.81	3.76	41.47	71.16
	025 <sup>1)</sup>	4.84 in <sup>3</sup> /rev	37.71	36.18	35.09	4.01	46.46	79.90
	028 <sup>1)</sup>	5.42 in <sup>3</sup> /rev	42.23	40.70	39.94 <sup>2)</sup>	4.27	51.74	76.73 <sup>2)</sup>
	031	6.10 in <sup>3</sup> /rev	47.56	46.03	45.27 <sup>2)</sup>	4.58	57.95	86.06 <sup>2)</sup>

1) 025 - 028 - 031 = 2500 R.P.M. max. 2) 028 - 031 = 2200 PSI max. int.  
 - Not to use because internal leakage greater than 50% theoretical flow.  
 - Port connection can be furnished with metric threads.

# High Pressure Double Vane Pump

## HT6GCC/HT6CCZ Series (Truck Pump) - Porting Diagram

### Porting Diagrams



# **HOF Hydraulic represented by**

## **Flowlution Co.,Ltd.**

26/48 Moo4 Suksavadh Road, Jomthong, 10150 Bangkok, Thailand  
Tel: +662 877 3223 Fax: +662 877 3373 info@flowlution.com

## **HOF Corindus Co.,Ltd. (Thailand only)**

891 Rama3 Road, Bangpongpan, Yannawa, 10120 Bangkok  
Tel: 02 284 1100 Fax: 02 683 4414 info@hofcorindus.co.th  
www.hofcorindus.co.th