

Hydraulic Triple Vane Pump HT6 HT67 & HT7 Series

Catalog 2021

High Pressure Triple Vane Pump

HT6DCCM Series

Specification

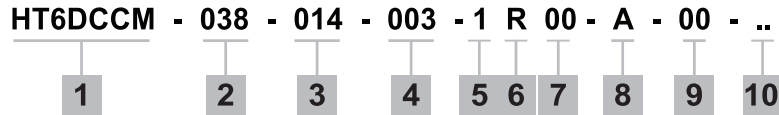
HT6DCCM for Triple pump

Shaft End Pump				Middle Pump				Cover End Pump				Min. speed rpm	Max. speed rpm	Weight kg (lb)
Size	Displacement cm ³ /r 1(in ³ /r)	Max. Intermittent Pressure bar (psi)	Max. Continuous Pressure bar (psi)	Size	Displacement cm ³ /r 1(in ³ /r)	Max. Intermittent Pressure bar (psi)	Max. Continuous Pressure bar (psi)	Size	Displacement cm ³ /r 1(in ³ /r)	Max. Intermittent Pressure bar (psi)	Max. Continuous Pressure bar (psi)			
014	47.6 (2.90)	240 (3500)	206 (3000)	003	10.8 (0.66)	275 (4000)	240 (3500)	003	10.8 (0.66)	275 (4000)	240 (3500)	400	2500	62.0 (136.7)
017	58.2 (3.55)			005	17.2 (1.05)			005	17.2 (1.05)					
020	66.0 (4.03)			006	21.3 (1.30)			006	21.3 (1.30)					
024	79.5 (4.85)			008	26.4 (1.61)			008	26.4 (1.61)					
028	89.7 (5.47)			010	34.1 (2.08)			010	34.1 (2.08)					
031	98.3 (6.00)			012	37.1 (2.26)			012	37.1 (2.26)					
035	111.0 (6.77)			014	46.0 (2.81)			014	46.0 (2.81)					
038	120.3 (7.34)			017	58.3 (3.56)			017	58.3 (3.56)					
042	136.0 (8.30)			020	63.8 (3.89)			020	63.8 (3.89)					
045	145.7 (8.89)			022	70.3 (4.29)			022	70.3 (4.29)					
050	158.0 (9.64)	206 (3000)	160 (2300)	025	79.3 (4.84)	025	79.3 (4.84)							
				028	88.8 (5.42)	206 (3000)	160 (2300)	028	88.8 (5.42)	206 (3000)	160 (2300)			
				031	100.0 (6.10)			031	100.0 (6.10)					

High Pressure Triple Vane Pump

HT6DCCM Series

Ordering Code



1. Model :

Mobile 1 Shaft seals (M) - HT6DCCM
 SAE C 2 bolts mounting
 flange J744

2. Displacement P1

Volumetric displacement cm³/rec (in³/rev)

- 014 - 47.6 (2.90)
- 017 - 58.2 (3.55)
- 020 - 66.0 (4.03)
- 024 - 79.5 (4.85)
- 028 - 89.7 (5.47)
- 031 - 98.3 (6.00)
- 035 - 111.0 (6.77)
- 038 - 120.3 (7.34)
- 042 - 136.0 (8.30)
- 045 - 145.7 (8.89)
- 050 - 158.0 (9.64)

3. Displacement P2

Volumetric displacement cm³/rec (in³/rev)

- 003 - 10.8 (0.66)
- 005 - 17.2 (1.05)
- 006 - 21.3 (1.30)
- 008 - 26.4 (1.61)
- 010 - 34.1 (2.08)
- 012 - 37.1 (2.26)
- 014 - 46.0 (2.81)
- 017 - 58.3 (3.56)
- 020 - 63.8 (3.89)
- 022 - 70.3 (4.29)
- 025 - 79.3 (4.84)
- 028 - 88.8 (5.42)
- 031 - 100.0 (6.10)

4. Displacement P3

Volumetric displacement cm³/rec (in³/rev)

- 003 - 10.8 (0.66)
- 005 - 17.2 (1.05)
- 006 - 21.3 (1.30)
- 008 - 26.4 (1.61)
- 010 - 34.1 (2.08)
- 012 - 37.1 (2.26)
- 014 - 46.0 (2.81)
- 017 - 58.3 (3.56)
- 020 - 63.8 (3.89)
- 022 - 70.3 (4.29)
- 025 - 79.3 (4.84)
- 028 - 88.8 (5.42)
- 031 - 100.0 (6.10)

5. Shaft

- 1 - non SAE Keyed Shaft
- 2 - SAE CC Keyed Shaft
- 3 - SAE C Splined Shaft
- 4 - SAE CC Splined Shaft
- 6 - non SAE Splined Shaft

6. Direction of rotation (view on shaft end)

- R - Turn right
- L - Turn left

7. Porting combination (see page Porting Diagrams)

- 00 - standard

8. Design letter

9. Port Connection

- 00 - UNC Port Connection
- M0 - Metric Port Connection

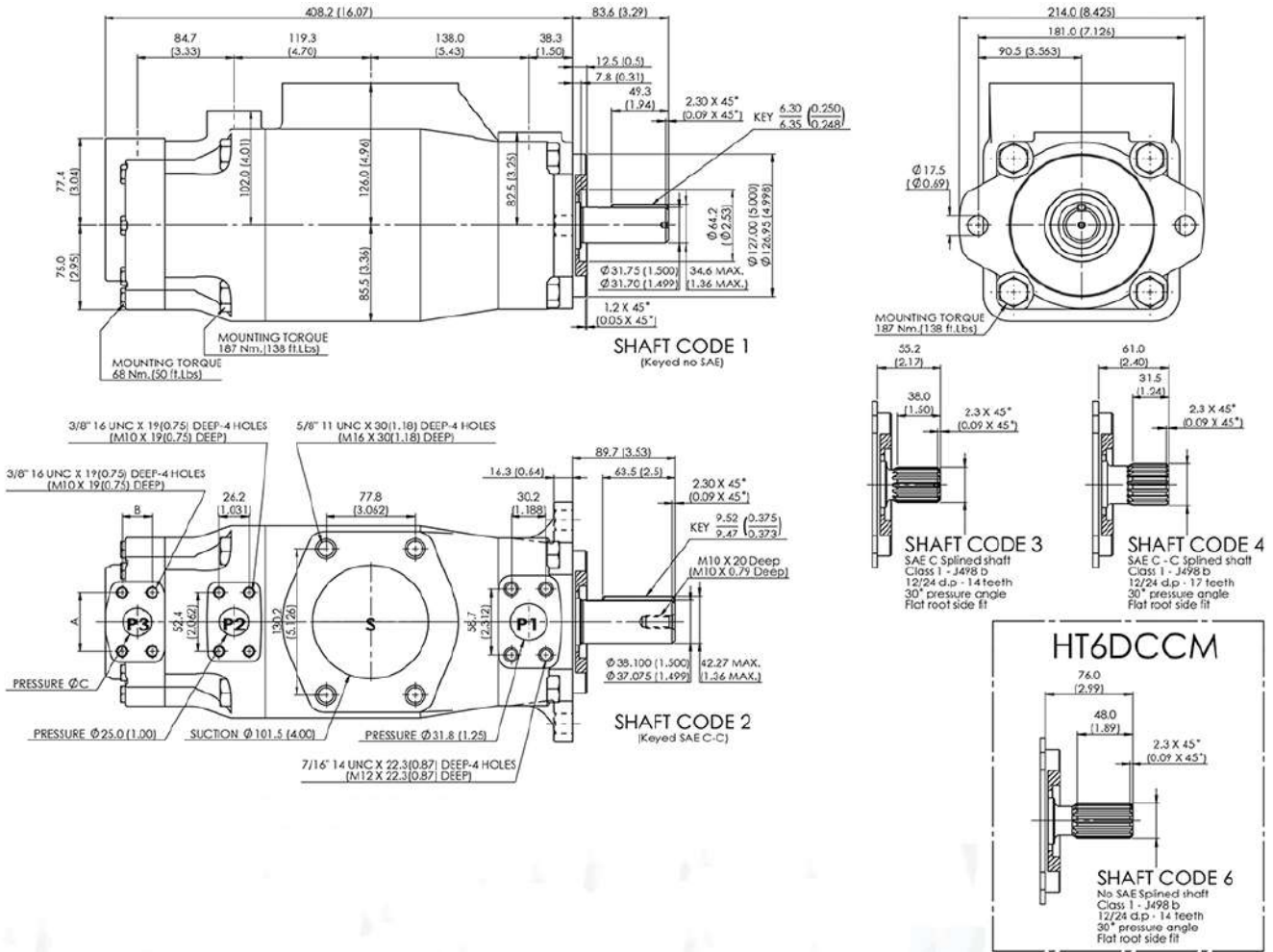
Code		4 bolt SAE flanges			
UNC	Metric	P1	P2	P3	S
00	M0	1 ¼"	1"	1"	4"
01	M1	1 ¼"	1"	3/4"	4"

10. Modifications

High Pressure Triple Vane Pump HT6DCCM Series

Installation Dimension mm (inch)

HT6DCCM



Shaft torque limits [in ³ /rev x PSI] (ml/rev x bar)				
Pump	Shaft	Vi x p max. P1 + P2 + P3	Shaft	Vi x p max. P1 + P2 + P3
HT6DCCM	1	38299 (43240)	3	54207 (61200)
	2	58901 (66500)	4	58901 (66500)

Alternate part				
Port	Code	A	B	C
P3	00 & M0	52.4 (2.06)	26.2 (1.03)	25.4 (1.00)
	01 & M1	47.6 (1.874)	22.2 (0.874)	19.0 (0.75)

High Pressure Triple Vane Pump HT6DCCM Series

Performance Characteristics

HT6DCCM

OPERATING CHARACTERISTICS - TYPICAL [115 SUS]

Pressure port	Series	Volumetric Displacement	Flow Q {GPM} & n = 1800 RPM			Input power P {HP} & n = 1800 RPM		
			p = 0 PSI	p = 2000 PSI	p = 3500 PSI	p = 0 PSI	p = 2000 PSI	p = 3500 PSI
P1	014	2.90 in ³ /rev	22.64	20.46	18.82	4.02	29.31	49.34
	017	3.55 in ³ /rev	27.68	25.50	23.86	4.31	35.20	59.64
	020	4.00 in ³ /rev	31.39	29.21	27.57	4.53	39.52	67.21
	024	4.80 in ³ /rev	37.82	35.63	33.99	4.91	47.02	80.32
	028	5.50 in ³ /rev	42.66	40.48	38.84	5.19	52.68	90.23
	031	6.00 in ³ /rev	46.75	44.57	42.93	5.43	57.45	98.58
	035	6.80 in ³ /rev	52.79	50.61	48.97	5.78	64.50	110.91
	038	7.30 in ³ /rev	57.21	55.03	53.39	6.04	69.66	119.94
	042 ²⁾	8.30 in ³ /rev	64.68	62.50	60.86	6.47	78.37	135.19
	045 ²⁾	8.90 in ³ /rev	69.29	67.11	65.47	6.74	83.74	144.61
050 ²⁾	9.64 in ³ /rev	75.14	72.96	71.78 ¹⁾	7.08	90.58	134.54 ¹⁾	
P2 & P3	003	0.66 in ³ /rev	5.14	3.61	-	2.11	8.45	-
	005	1.05 in ³ /rev	8.18	6.65	5.56	2.29	12.00	19.59
	006	1.30 in ³ /rev	10.13	8.60	7.51	2.40	14.28	23.57
	008	1.61 in ³ /rev	12.55	11.02	9.93	2.54	17.11	28.53
	010	2.08 in ³ /rev	16.22	14.69	13.60	2.76	21.38	36.00
	012	2.26 in ³ /rev	17.64	16.11	15.02	2.84	23.05	38.92
	014	2.81 in ³ /rev	21.88	20.35	19.26	3.09	27.99	47.56
	017	3.56 in ³ /rev	27.73	26.20	25.11	3.43	34.81	59.51
	020	3.89 in ³ /rev	30.34	28.81	27.42	3.58	37.86	64.85
	022	4.29 in ³ /rev	33.43	31.90	30.81	3.76	41.47	71.16
	025	4.84 in ³ /rev	37.71	36.18	35.09	4.01	46.46	79.90
	028	5.42 in ³ /rev	42.23	40.70	39.94 ¹⁾	4.27	51.74	76.73 ¹⁾
	031	6.10 in ³ /rev	47.56	46.03	45.27 ¹⁾	4.58	57.95	86.06 ¹⁾

1) 028 - 031 - 050 = 3000 PSI max. int. 2) 042 - 045 - 050 = 2200 R.P.M. max
 - Not to use because internal leakage greater than 50% theoretical flow.
 - Port connection can be furnished with metric threads.

High Pressure Triple Vane Pump

HT67DBB/HT67DCB/HT67DCC Series

Specification

HT67DBB for Triple pump

Shaft End Pump				Middle Pump				Cover End Pump				Min. speed rpm	Max. speed rpm	Weight kg (lb)
Size	Displacement cm ³ /r 1(in ³ /r)	Max. Intermittent Pressure bar (psi)	Max. Continuous Pressure bar (psi)	Size	Displacement cm ³ /r 1(in ³ /r)	Max. Intermittent Pressure bar (psi)	Max. Continuous Pressure bar (psi)	Size	Displacement cm ³ /r 1(in ³ /r)	Max. Intermittent Pressure bar (psi)	Max. Continuous Pressure bar (psi)			
014	47.6 (2.90)	300 (4350)	250 (3600)	002	5.8 (0.35)	300 (4350)	275 (4000)	002	5.8 (0.35)	300 (4350)	275 (4000)	600	2500	62.0 (136.7)
017	58.2 (3.55)			003	9.8 (0.59)			003	9.8 (0.59)					
020	66.0 (4.00)			004	12.8 (0.78)			004	12.8 (0.78)					
022	70.0 (4.27)			005	15.9 (0.97)			005	15.9 (0.97)					
024	79.5 (4.80)			006	19.8 (1.20)			006	19.8 (1.20)					
028	87.7 (5.50)			007	22.5 (1.37)			007	22.5 (1.37)					
031	98.3 (6.00)			008	24.9 (1.51)			008	24.9 (1.51)					
035	111.0 (6.80)			280 (4060)	235 (3400)			009	26.0 (1.70)					
038	120.3 (7.30)	010	31.8 (1.94)			010	31.8 (1.94)							
042	136.0 (8.30)	260 (3770)	235 (3400)			011	35.0 (2.13)	011	35.0 (2.13)					
045	145.7 (8.90)	240 (3500)	206 (3000)	012	41.0 (2.50)	012	41.0 (2.50)							
050	158.0 (9.64)	206 (3000)	160 (2300)	014	45.0 (2.74)	014	45.0 (2.74)							
				015	50.0 (3.05)	280 (4060)	240 (3500)	015	50.0 (3.05)	280 (4060)	240 (3500)			

HT67DCB for Triple pump

Shaft End Pump				Middle Pump				Cover End Pump				Min. speed rpm	Max. speed rpm	Weight kg (lb)
Size	Displacement cm ³ /r 1(in ³ /r)	Max. Intermittent Pressure bar (psi)	Max. Continuous Pressure bar (psi)	Size	Displacement cm ³ /r 1(in ³ /r)	Max. Intermittent Pressure bar (psi)	Max. Continuous Pressure bar (psi)	Size	Displacement cm ³ /r 1(in ³ /r)	Max. Intermittent Pressure bar (psi)	Max. Continuous Pressure bar (psi)			
014	47.6 (2.90)	300 (4350)	250 (3600)	003	10.8 (0.66)	275 (4000)	240 (3500)	002	5.8 (0.35)	300 (4350)	275 (4000)	600	2500	62.0 (136.7)
017	58.2 (3.55)			005	17.2 (1.05)			003	9.8 (0.59)					
020	66.0 (4.00)			006	21.3 (1.30)			004	12.8 (0.78)					
022	70.0 (4.27)			008	26.4 (1.61)			005	15.9 (0.97)					
024	79.5 (4.80)			010	34.1 (2.08)			006	19.8 (1.20)					
028	87.7 (5.50)			012	37.1 (2.26)			007	22.5 (1.37)					
031	98.3 (6.00)			014	46.0 (2.81)			008	24.9 (1.51)					
035	111.0 (6.80)			280 (4060)	235 (3400)			017	58.3 (3.56)					
038	120.3 (7.30)	020	63.8 (3.89)			010	31.8 (1.94)							
042	136.0 (8.30)	260 (3770)	235 (3400)			022	70.3 (4.29)	011	35.0 (2.13)					
045	145.7 (8.90)	240 (3500)	206 (3000)	025	79.3 (4.84)	012	41.0 (2.50)							
050	158.0 (9.64)	206 (3000)	160 (2300)	028	88.8 (5.42)	014	45.0 (2.74)							
				031	100.0 (6.10)	206 (3000)	160 (2300)	015	50.0 (3.05)	280 (4060)	240 (3500)			

High Pressure Triple Vane Pump

HT67DBB/HT67DCB/HT67DCC Series

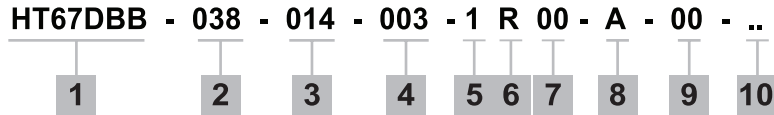
HT67DCC for Triple pump

Shaft End Pump				Middle Pump				Cover End Pump				Min. speed rpm	Max. speed rpm	Weight kg (lb)
Size	Displacement cm ³ /r 1(in ³ /r)	Max. Intermittent Pressure bar (psi)	Max. Continuous Pressure bar (psi)	Size	Displacement cm ³ /r 1(in ³ /r)	Max. Intermittent Pressure bar (psi)	Max. Continuous Pressure bar (psi)	Size	Displacement cm ³ /r 1(in ³ /r)	Max. Intermittent Pressure bar (psi)	Max. Continuous Pressure bar (psi)			
014	47.6 (2.90)	300 (4350)	250 (3600)	003	10.8 (0.66)	275 (4000)	240 (3500)	003	10.8 (0.66)	275 (4000)	240 (3500)	600	2500	62.0 (136.7)
017	58.2 (3.55)			005	17.2 (1.05)			005	17.2 (1.05)					
020	66.0 (4.00)			006	21.3 (1.30)			006	21.3 (1.30)					
022	70.0 (4.27)			008	26.4 (1.61)			008	26.4 (1.61)					
024	79.5 (4.80)			010	34.1 (2.08)			010	34.1 (2.08)					
028	87.7 (5.50)			012	37.1 (2.26)			012	37.1 (2.26)					
031	98.3 (6.00)			014	46.0 (2.81)			014	46.0 (2.81)					
035	111.0 (6.80)			017	58.3 (3.56)			017	58.3 (3.56)					
038	120.3 (7.30)	280 (4060)	235 (3400)	020	63.8 (3.89)	020	63.8 (3.89)							
042	136.0 (8.30)			260 (3770)	235 (3400)	022	70.3 (4.29)	022	70.3 (4.29)					
045	145.7 (8.90)	240 (3500)	206 (3000)	025	79.3 (4.84)	025	79.3 (4.84)							
050	158.0 (9.64)	206 (3000)	160 (2300)	028	88.8 (5.42)	206 (3000)	160 (2300)	028	88.8 (5.42)	206 (3000)	160 (2300)			
				031	100.0 (6.10)			031	100.0 (6.10)					

High Pressure Triple Vane Pump

HT67DBB/HT67DCB/HT67DCC Series

Ordering Code



1. Model :

Industrial - HT67DBB, HT67DCB, HT67DCC
SAE C 2 bolts mounting flange J744

2. Displacement P1

Volumetric displacement cm³/rec (in³/rev)

- 014 - 47.6 (2.90)
- 017 - 58.2 (3.55)
- 020 - 66.0 (4.03)
- 022 - 70.0 (4.27)
- 024 - 79.5 (4.85)
- 028 - 89.7 (5.47)
- 031 - 98.3 (6.00)
- 035 - 111.0 (6.77)
- 038 - 120.3 (7.34)
- 042 - 136.0 (8.30)
- 045 - 145.7 (8.89)
- 050 - 158.0 (9.64)

3. Displacement P2

Volumetric displacement cm³/rec (in³/rev)

- | 6C | 7B |
|--------------------|-------------------|
| 003 - 10.8 (0.66) | 002 - 5.8 (0.35) |
| 005 - 17.2 (1.05) | 003 - 9.8 (0.60) |
| 006 - 21.3 (1.30) | 004 - 12.8 (0.78) |
| 008 - 26.4 (1.61) | 005 - 15.9 (0.97) |
| 010 - 34.1 (2.08) | 006 - 19.8 (1.20) |
| 012 - 37.1 (2.26) | 007 - 22.5 (1.37) |
| 014 - 46.0 (2.81) | 008 - 24.9 (1.51) |
| 017 - 58.3 (3.56) | 009 - 28.0 (1.70) |
| 020 - 63.8 (3.89) | 010 - 31.8 (1.92) |
| 022 - 70.3 (4.29) | 011 - 35.0 (2.14) |
| 025 - 79.3 (4.84) | 012 - 41.0 (2.47) |
| 028 - 88.8 (5.42) | 014 - 45.0 (2.70) |
| 031 - 100.0 (6.10) | 015 - 50.0 (3.01) |

4. Displacement P3

Volumetric displacement cm³/rec (in³/rev)

- | 6C | 7B |
|--------------------|-------------------|
| 003 - 10.8 (0.66) | 002 - 5.8 (0.35) |
| 005 - 17.2 (1.05) | 003 - 9.8 (0.60) |
| 006 - 21.3 (1.30) | 004 - 12.8 (0.78) |
| 008 - 26.4 (1.61) | 005 - 15.9 (0.97) |
| 010 - 34.1 (2.08) | 006 - 19.8 (1.20) |
| 012 - 37.1 (2.26) | 007 - 22.5 (1.37) |
| 014 - 46.0 (2.81) | 008 - 24.9 (1.51) |
| 017 - 58.3 (3.56) | 009 - 28.0 (1.70) |
| 020 - 63.8 (3.89) | 010 - 31.8 (1.92) |
| 022 - 70.3 (4.29) | 011 - 35.0 (2.14) |
| 025 - 79.3 (4.84) | 012 - 41.0 (2.47) |
| 028 - 88.8 (5.42) | 014 - 45.0 (2.70) |
| 031 - 100.0 (6.10) | 015 - 50.0 (3.01) |

5. Type of shaft

- 1 - non SAE Keyed Shaft
- 2 - SAE CC Keyed Shaft
- 3 - SAE C Splined Shaft
- 4 - SAE CC Splined Shaft

6. Direction of rotation (view on shaft end)

- R - Turn right
- L - Turn left

7. Porting combination (see page Porting Diagrams)

- 00 - standard

8. Design letter

9. Port Connection (4 bolts SAE flange J518C)

- 00 - UNC Port Connection
- M0 - Metric Port Connection

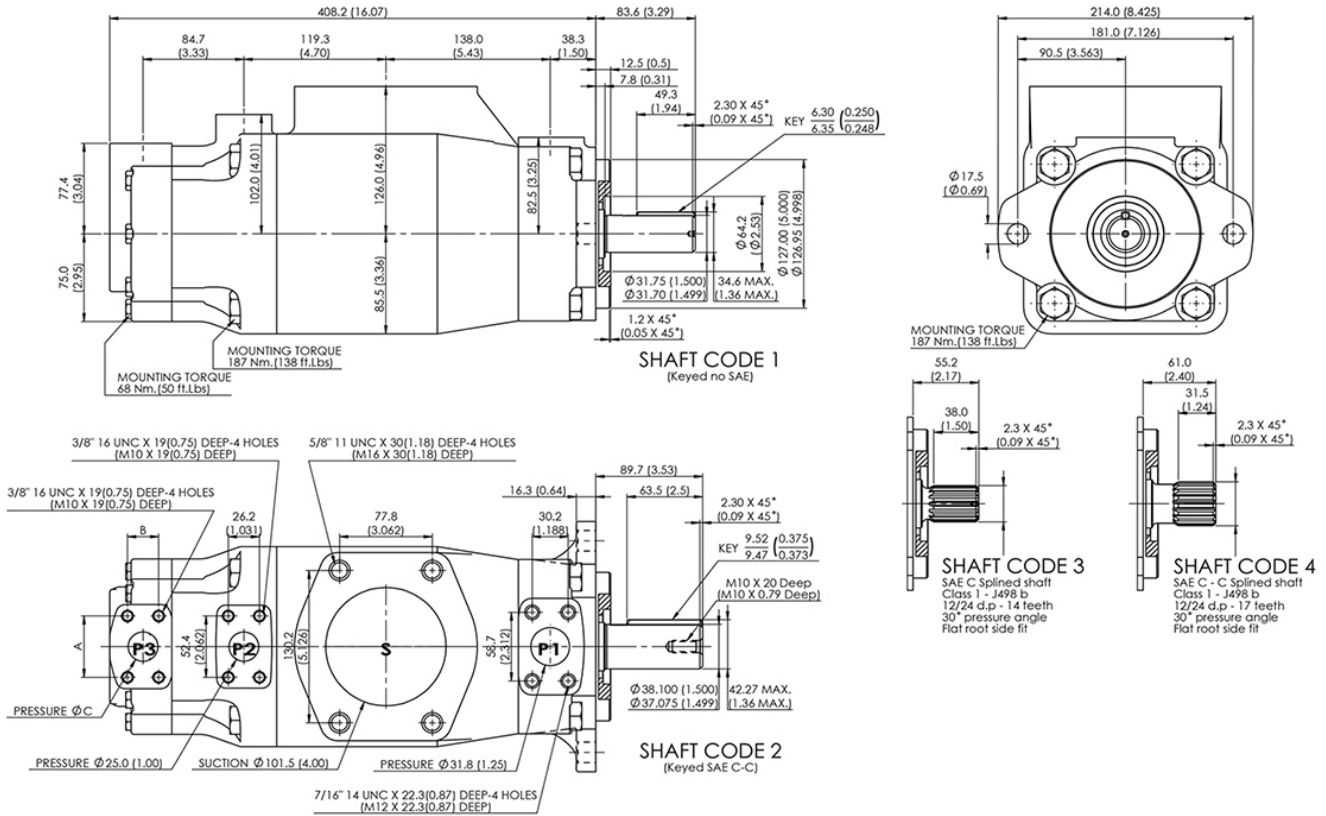
Code		4 bolt SAE flanges			
UNC	Metric	P1	P2	P3	S
00	M0	1¼"	1"	1"	4"
01	M1	1¼"	1"	3/4"	4"

10. Modifications

High Pressure Triple Vane Pump HT67DBB/HT67DCB/HT67DCC Series

Installation Dimension mm (inch)

HT67DBB, HT67DCB, HT67DCC



Shaft torque limits [in ³ /rev x PSI] (ml/rev x bar)				
Pump	Shaft	Vi x p max. P1 + P2 + P3	Shaft	Vi x p max. P1 + P2 + P3
HT67DCC	1	38299 (43240)	3	54207 (61200)
HT6DCCM	2	58901 (66500)	4	58901 (66500)

Alternate part				
Port	Code	A	B	C
P3	00 & M0	52.4 (2.06)	26.2 (1.03)	25.4 (1.00)
	01 & M1	47.6 (1.874)	22.2 (0.874)	19.0 (0.75)

High Pressure Triple Vane Pump

HT67DBB/HT67DCB/HT67DCC Series

Performance Characteristics

HT67DBB

OPERATING CHARACTERISTICS - TYPICAL [115 SUS]

Pressure port	Series	Volumetric Displacement	Flow Q {GPM} & n = 1800 RPM			Input power P {HP} & n = 1800 RPM		
			p = 0 PSI	p = 2000 PSI	p = 3500 PSI	p = 0 PSI	p = 2000 PSI	p = 3500 PSI
P1	014	2.90 in ³ /rev	22.64	20.46	18.82	4.02	29.31	49.34
	017	3.55 in ³ /rev	27.68	25.50	23.86	4.31	35.20	59.64
	020	4.00 in ³ /rev	31.39	29.21	27.57	4.53	39.52	67.21
	022	4.29 in ³ /rev	33.43	31.69	30.32	4.19	42.37	72.57
	024	4.80 in ³ /rev	37.82	35.63	33.99	4.91	47.02	80.32
	028	5.50 in ³ /rev	42.66	40.48	38.84	5.19	52.68	90.23
	031	6.00 in ³ /rev	46.75	44.57	42.93	5.43	57.45	98.58
	035	6.80 in ³ /rev	52.79	50.61	48.97	5.78	64.50	110.91
	038	7.30 in ³ /rev	57.21	55.03	53.39	6.04	69.66	119.94
	042	8.30 in ³ /rev	64.68	62.50	60.86	6.47	78.37	135.19
	045	8.90 in ³ /rev	69.29	67.11	65.47	6.74	83.74	144.61
	050	9.64 in ³ /rev	75.14	72.96	71.78 ¹⁾	7.08	90.58	134.54 ¹⁾
P2 & P3	002	0.35 in ³ /rev	2.29	1.84	1.26	0.67	3.48	7.23
	003	0.59 in ³ /rev	3.88	3.43	2.85	0.80	5.36	11.52
	004	0.78 in ³ /rev	5.07	4.62	4.04	0.80	6.70	14.74
	005	0.97 in ³ /rev	6.31	5.86	5.28	0.93	8.17	18.09
	006	1.20 in ³ /rev	7.84	7.39	6.81	0.93	10.05	22.25
	007	1.37 in ³ /rev	8.90	8.45	7.89	1.07	11.39	25.20
	008	1.51 in ³ /rev	9.88	9.43	8.84	1.07	12.46	27.74
	009	1.70 in ³ /rev	11.09	10.56	10.06	1.20	13.94	31.09
	010	1.94 in ³ /rev	12.60	12.15	11.57	1.20	15.68	35.12
	011	2.13 in ³ /rev	13.86	13.41	12.91 ²⁾	1.34	17.15	36.19 ²⁾
	012	2.50 in ³ /rev	16.24	15.79	15.29 ²⁾	1.47	19.97	42.22 ²⁾
	014	2.74 in ³ /rev	17.83	17.38	16.88 ²⁾	1.60	21.84	46.24 ²⁾
015	3.05 in ³ /rev	19.81	19.36	18.91 ³⁾	1.74	24.26	47.85 ³⁾	

1) 050 = 3000 PSI max. int. 2) 011 - 012 - 014 = 4350 PSI max. int. 3) 015 = 4000 PSI max. int.
 - Not to use because internal leakage greater than 50% theoretical flow.
 - Port connection can be furnished with metric threads.

High Pressure Triple Vane Pump HT67DBB/HT67DCB/HT67DCC Series

HT67DCB, HT67DCC

OPERATING CHARACTERISTICS - TYPICAL [115 SUS]

Pressure port	Series	Volumetric Displacement	Flow Q {GPM} & n = 1800 RPM			Input power P {HP} & n = 1800 RPM		
			p = 0 PSI	p = 2000 PSI	p = 3500 PSI	p = 0 PSI	p = 2000 PSI	p = 3500 PSI
P1	014	2.90 in ³ /rev	22.64	20.46	18.82	4.02	29.31	49.34
	017	3.55 in ³ /rev	27.68	25.50	23.86	4.31	35.20	59.64
	020	4.00 in ³ /rev	31.39	29.21	27.57	4.53	39.52	67.21
	022	4.29 in ³ /rev	33.43	31.69	30.32	4.19	42.37	72.57
	024	4.80 in ³ /rev	37.82	35.63	33.99	4.91	47.02	80.32
	028	5.50 in ³ /rev	42.66	40.48	38.84	5.19	52.68	90.23
	031	6.00 in ³ /rev	46.75	44.57	42.93	5.43	57.45	98.58
	035	6.80 in ³ /rev	52.79	50.61	48.97	5.78	64.50	110.91
	038	7.30 in ³ /rev	57.21	55.03	53.39	6.04	69.66	119.94
	042	8.30 in ³ /rev	64.68	62.50	60.86	6.47	78.37	135.19
	045	8.90 in ³ /rev	69.29	67.11	65.47	6.74	83.74	144.61
	050	9.64 in ³ /rev	75.14	72.96	71.78 ¹⁾	7.08	90.58	134.54 ¹⁾
P2	003	0.66 in ³ /rev	5.14	3.61	-	2.11	8.45	-
	005	1.05 in ³ /rev	8.18	6.65	5.56	2.29	12.00	19.59
	006	1.30 in ³ /rev	10.13	8.60	7.51	2.40	14.28	23.57
	008	1.61 in ³ /rev	12.55	11.02	9.93	2.54	17.11	28.53
	010	2.08 in ³ /rev	16.22	14.69	13.60	2.76	21.38	36.00
	012	2.26 in ³ /rev	17.64	16.11	15.02	2.84	23.05	38.92
	014	2.81 in ³ /rev	21.88	20.35	19.26	3.09	27.99	47.56
	017	3.56 in ³ /rev	27.73	26.20	25.11	3.43	34.81	59.51
	020	3.89 in ³ /rev	30.34	28.81	27.42	3.58	37.86	64.85
	022	4.29 in ³ /rev	33.43	31.90	30.81	3.76	41.47	71.16
	025	4.84 in ³ /rev	37.71	36.18	35.09	4.01	46.46	79.90
	028	5.42 in ³ /rev	42.23	40.70	39.94 ¹⁾	4.27	51.74	76.73 ¹⁾
	031 ^{using}	6.10 in ³ /rev	47.56	46.03	45.27 ¹⁾	4.58	57.95	86.06 ¹⁾

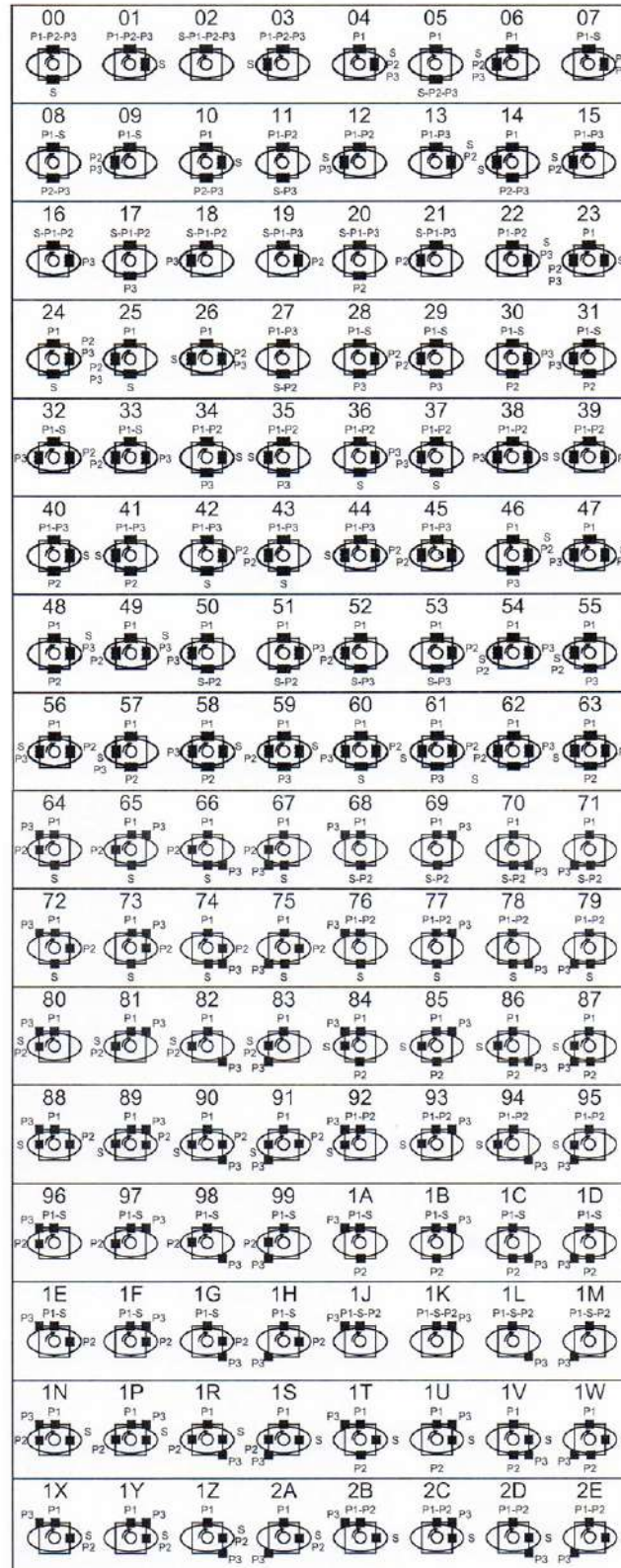
High Pressure Triple Vane Pump HT67DBB/HT67DCB/HT67DCC Series

Pressure port	Series	Volumetric Displacement	Flow Q (GPM) & n = 1800 RPM			Input power P (HP) & n = 1800 RPM		
			p = 0 PSI	p = 2000 PSI	p = 3500 PSI	p = 0 PSI	p = 2000 PSI	p = 3500 PSI
P3	002	0.35 in ³ /rev	2.29	1.84	1.26	0.67	3.48	7.23
	003	0.59 in ³ /rev	3.88	3.43	2.85	0.80	5.36	11.52
	004	0.78 in ³ /rev	5.07	4.62	4.04	0.80	6.70	14.74
	005	0.97 in ³ /rev	6.31	5.86	5.28	0.93	8.17	18.09
	006	1.20 in ³ /rev	7.84	7.39	6.81	0.93	10.05	22.25
	007	1.37 in ³ /rev	8.90	8.45	7.89	1.07	11.39	25.20
	008	1.51 in ³ /rev	9.88	9.43	8.84	1.07	12.46	27.74
	009	1.70 in ³ /rev	11.09	10.56	10.06	1.20	13.94	31.09
	010	1.94 in ³ /rev	12.60	12.15	11.57	1.20	15.68	35.12
	011	2.13 in ³ /rev	13.86	13.41	12.91 ²⁾	1.34	17.15	36.19 ²⁾
	012	2.50 in ³ /rev	16.24	15.79	15.29 ²⁾	1.47	19.97	42.22 ²⁾
	014	2.74 in ³ /rev	17.83	17.38	16.88 ²⁾	1.60	21.84	46.24 ²⁾
	015	3.05 in ³ /rev	19.81	19.36	18.91 ³⁾	1.74	24.26	47.85 ³⁾

1) 028 - 031 - 050 = 3000 PSI max. int. 2) 011 - 012 - 014 = 4350 PSI max. int. 3) 015 = 4000 PSI max. int.
 - Not to use because internal leakage greater than 50% theoretical flow.
 - Port connection can be furnished with metric threads.

High Pressure Triple Vane Pump HT6/HT67/HT7 Series - Porting Diagram

Porting Diagrams



HOF Hydraulic represented by

Flowlution Co.,Ltd.

26/48 Moo4 Suksavadh Road, Jomthong, 10150 Bangkok, Thailand
Tel: +662 877 3223 Fax: +662 877 3373 info@flowlution.com

HOF Corindus Co.,Ltd. (Thailand only)

891 Rama3 Road, Bangpongpan, Yannawa, 10120 Bangkok
Tel: 02 284 1100 Fax: 02 683 4414 info@hofcorindus.co.th
www.hofcorindus.co.th