



Hydraulic Tank Accessories

Catalog 2021

Filler Breather Filter HB-55-72

Features and Handling

- Filler Breather with filter are intended primary for mounting directly on reservoir covers and are furnished completely with flange gaskets and ready for installation.



Ordering Code

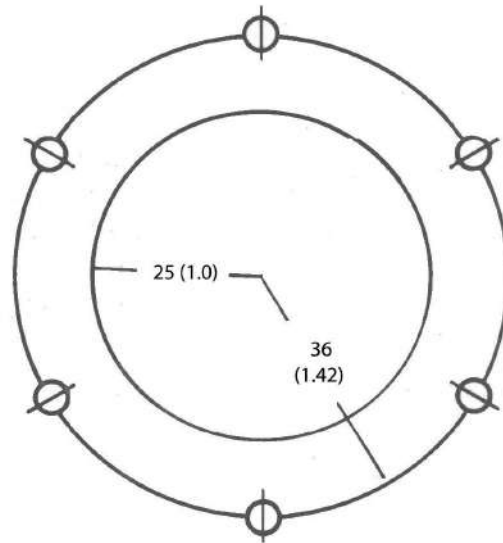
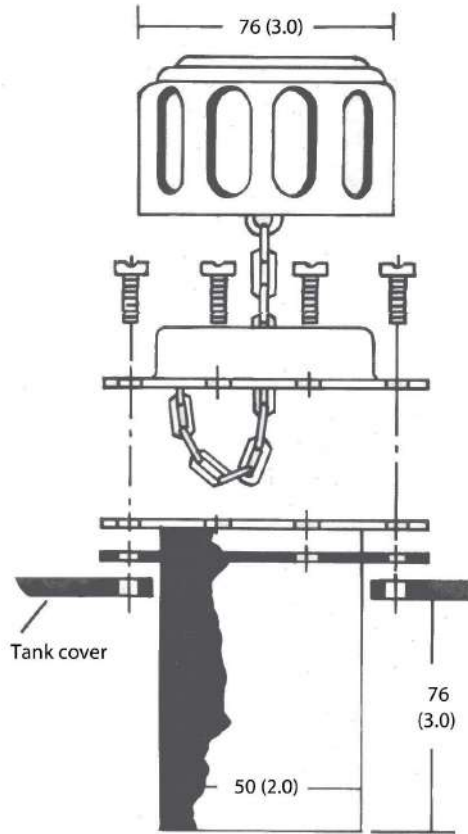
HB - 55 - 72

1

1. Model : HB-55-72

Filler Breather Filter HB-55-72

Installation Dimension mm (inch)



Weight: 0.25 kg (0.55 lbs)

Drive Coupling HC Series

Features and Handling

- Drive Couplings are made of steel reinforce Nylon sleeve with two steel drive hubs. The crowned teeth form gears permit axial and angular misalignment.
- Easy to assemble and no maintenance or lubrication needed
- After years of experience, our drive coupling has been developed to withstand higher torque than other coupling in the market



Materials

Coupling halves : cast iron steel
Sleeve : Nylon 66
Max temp sleeve : 83°C

To select coupling model check application to establish running load condition. Check chart for factor (F) and apply factor (F) to *Rating of coupling formulae. This answer you now apply to *Rating/ 100 rev/min below. It is advisable always to check shaft sizes being used on application and check with dimension "Min Bore".

Application	Factor (F)	
	Electric motor	Petrol/diesel engine
Uniform load	1.00	1.20
Medium shock	1.25	1.50
Heavy shock	1.75	2.00

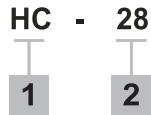
$$*Rating\ of\ coupling = \frac{HP\ of\ application \times 100 \times F}{rev/min\ of\ application}$$

Specification

Model	Max Speed rpm	*Rating/ 100 rev/min kw (hp)	Weight kg (lb)
HC-28	5000	0.75 (1.00)	1.1 (2.4)
HC-42	5000	1.32 (1.75)	1.9 (4.2)
HC-55	5000	6.00 (8.00)	5.0 (11.0)

Drive Coupling HC Series

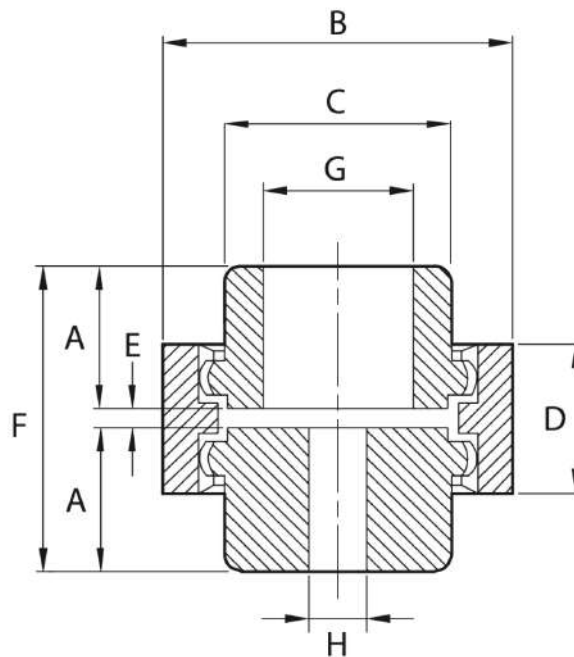
Ordering Code



1. Model : HC

2. Bore Size (mm) : 28, 42, 55

Installation Dimension mm (inch)



Model	Dimension mm (inch)								
	A	B	C	D	E	F	G		H Pilot Bore
							Max Bore	Min Bore	
HC-28	40.0 (1.57)	67.5 (2.65)	44 (1.73)	37 (1.45)	4 (0.16)	84 (3.31)	28 (1.100)	10 (0.39)	10 (0.39)
HC-42	40.0 (1.57)	88 (3.46)	60 (2.36)	50 (1.97)	4 (0.16)	84 (3.31)	42 (1.65)	14 (0.55)	10 (0.39)
HC-55	57.6 (2.27)	122 (4.80)	80 (3.15)	64 (2.52)	4 (0.16)	124 (4.88)	55 (2.17)	19.0 (0.74)	14 (0.55)

Suction Filter

HF Series

Features and Handling

- Suction Filters are made from stainless steel mesh grade 125 micron reinforced with metal mesh and engineering resin for both ends. They are suitable for a wide variety of fluid system such as hydraulic systems. They can protect components in system, extend life and reduce breakdown for continuous equipment operation.

- The direction of flow on filters is from outside to inside. Filters can be cleaned by blowing compressed air or liquid through the mesh from the inside during maintenance.

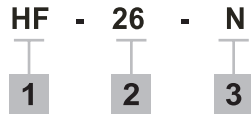


Specification

Model	Flow L/min (USgsm)	Filteration Micron	Weight kg (lb)
HF-7	25 (7)	125	0.11 (0.24)
			0.11 (0.24)
HF-13	50 (13)		0.14 (0.31)
			0.14 (0.31)
HF-26	100 (26)		0.29 (0.64)
HF-53	200 (53)		0.32 (0.70)
HF-56	212 (56)		0.37 (0.81)
HF-92	350 (92)		0.65 (1.43)
HF-105	400 (105)		0.66 (1.45)

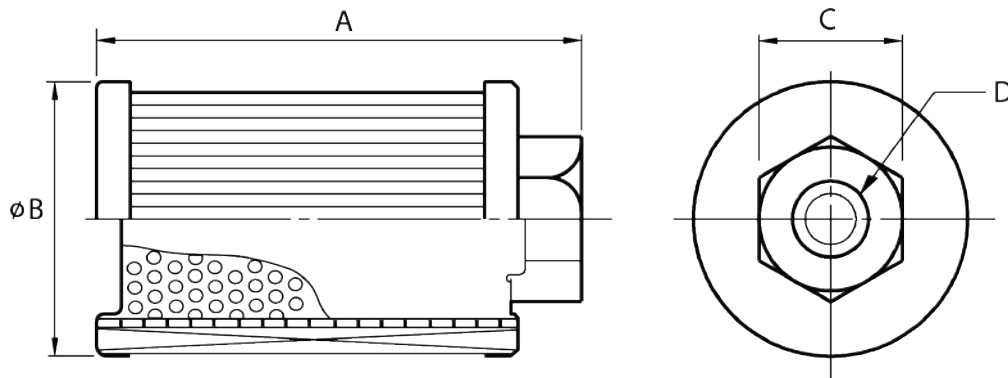
Suction Filter HF Series

Ordering Code



1. Model : HF
2. Flow (USgpm) : 7, 13, 26, 53, 56, 92, 105
3. Threaded connection
 P - BSPT
 N - NPT

Installation Dimension mm (inch)



Model	Dimension mm (inch)			
	A	B	C	D (Thread)
HF-7	90 (3-1/2)	58 (2-1/4)	45 (1-3/4)	3/4" (NPT)
				1"
HF-13	157 (6-3/16)	58 (2-1/4)	45 (1-3/4)	3/4" (NPT)
				1"
HF-26	145 (5-11/16)	89 (3-1/2)	67 (2-5/8)	1-1/2"
HF-53	213 (8-3/8)	89 (3-1/2)	67 (2-5/8)	1-1/2"
HF-56	213 (8-3/8)	102 (4.0)	77 (3.0)	2"
HF-92	222 (8-3/4)	149 (5-7/8)	91 (3-5/8)	2-1/2"
HF-105	277 (10-7/8)	135 (5-5/16)	108 (4-1/4)	3"

Foot Mounts

HFB-A,B,C Series

Features and Handling

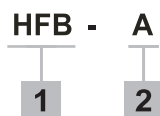
• Foot bracket kits can be used to mount pumps or motors having standard SAE-J744 2-bolt A, B, or C mounting flanges. These designations correspond to -A-, -B-, and -C- letters in the kit model number. Each kit includes a bracket and screws for mounting to the pump or motor. Kits are not included with pumps and motors and must be ordered separately by model number.



Specification

Model	FOOT FOR HV10, HV20, HV, HVQ, HVT, HVQT, HT6, HT7, HT67, HM
HFB-A	- HV10, HV20, HV10P, HV10F, HV20P, HV20F - HM2-210
HFB-B	- 20HV/HVQ, 25HV/HVQ - 25HVT/HVQT - HV2010, HV2020, HV2010P, HV2010F, HV2020P, HV2020F, 2520HV/HVQ - HT7BS, HT6C, HT6CM - HT6CC, HT6CCM, HT6CCW, HT6CCMW, HT6CCP, HT6CCZ - 25HM
HFB-C	- 35HV/HVQ, 45HV/HVQ, 3520HV/HVQ, 3525HV/HVQ - 4520HV/HVQ, 4525HV/HVQ, 4535HV/HVQ, - 35HVT/HVQT, 45HVT/HVQT, - HT6CP, HT6D, HT6DM, HT6DP, HT7DS, HT6E, HT6EM, HT6EP, HT7ES - HT6DC, HT6DCM, HT6DCP, HT6DCW, HT6DCMW, HT67DC, HT67DCW - HT6EC, HT6ECM, HT6ECP, HT67EC, HT6ED, HT6EDM, HT6EDP, HT7EDS - HT6DCC, HT6DCCM - 35HM, 45HM

Ordering Code

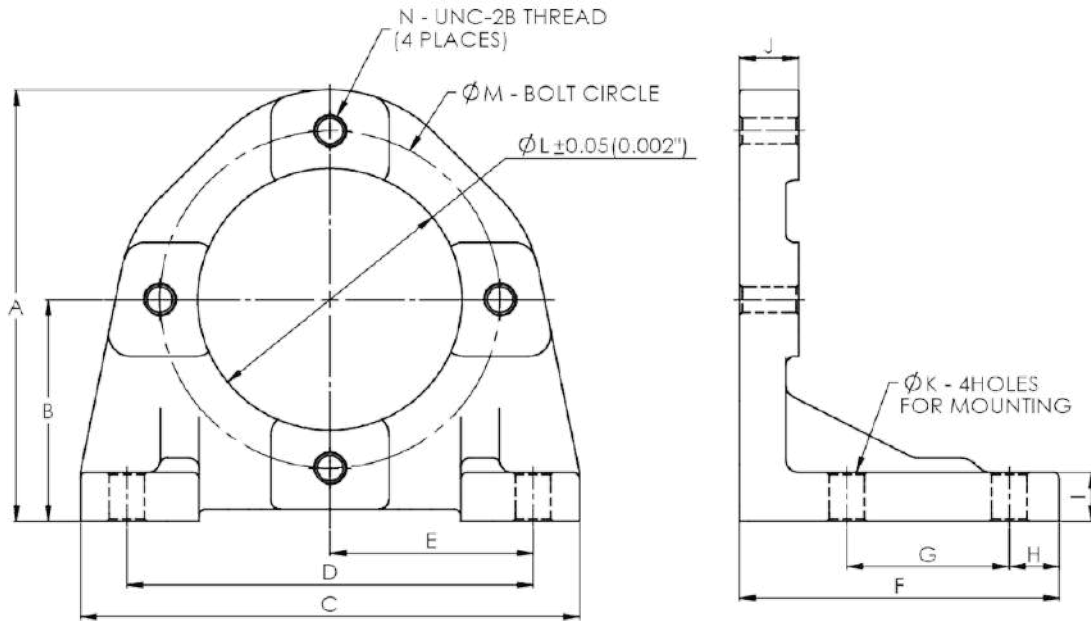


1. Model : HFB
2. Size : A, B, C

Foot Mounts

HFB-A,B,C Series

Installation Dimension mm (inch)



Model	Dimension mm (inch)													
	A	B	C	D	E	F	G	H	I	J	K	L	M	N
HFB-A	134.9 (5.31)	69.9 (2.75)	152.4 (6.00)	127.0 (5.00)	63.5 (2.50)	96.0 (3.78)	50.8 (2.00)	12.7 (0.50)	12.7 (0.50)	17.5 (0.69)	11.0 (0.43)	82.6 (3.25)	106.4 (4.19)	3/8"-16 UNC (Ø8.0 ± 0.1)
HFB-B	180.8 (7.12)	92.2 (3.03)	171.5 (6.75)	146.0 (5.75)	73.0 (2.87)	95.8 (3.77)	50.8 (2.00)	12.7 (0.50)	12.7 (0.50)	19.0 (0.75)	11.0 (0.43)	101.7 (4.00)	146.0 (5.75)	1/2"-13 UNC (Ø10.8 ± 0.1)
HFB-C	215.9 (8.50)	109.5 (4.31)	265.2 (10.44)	235.0 (9.25)	117.5 (4.63)	131.6 (5.18)	76.2 (3.00)	17.3 (0.68)	16.7 (0.62)	20.5 (0.80)	17.0 (0.66)	127.1 (5.00)	181.0 (7.13)	5/8"-11UNC (Ø13.5 ± 0.1)

Return Line Filter

HFR-10

Features and Handling

- Full flow filtration
- 10 micron filter elements
- Pipe ports.
- Spin-on, throw-away elements.
- Heads include 5 or 25 psi by-pass spring assemblies.



Ordering Code : HFR Series Spin-On Return Line Filter

HFR	-	10	-	S	-	P
1		2		3		4

1. Model : HRF

2. Filtration Micron
10-10 Micron
25-25 Micron

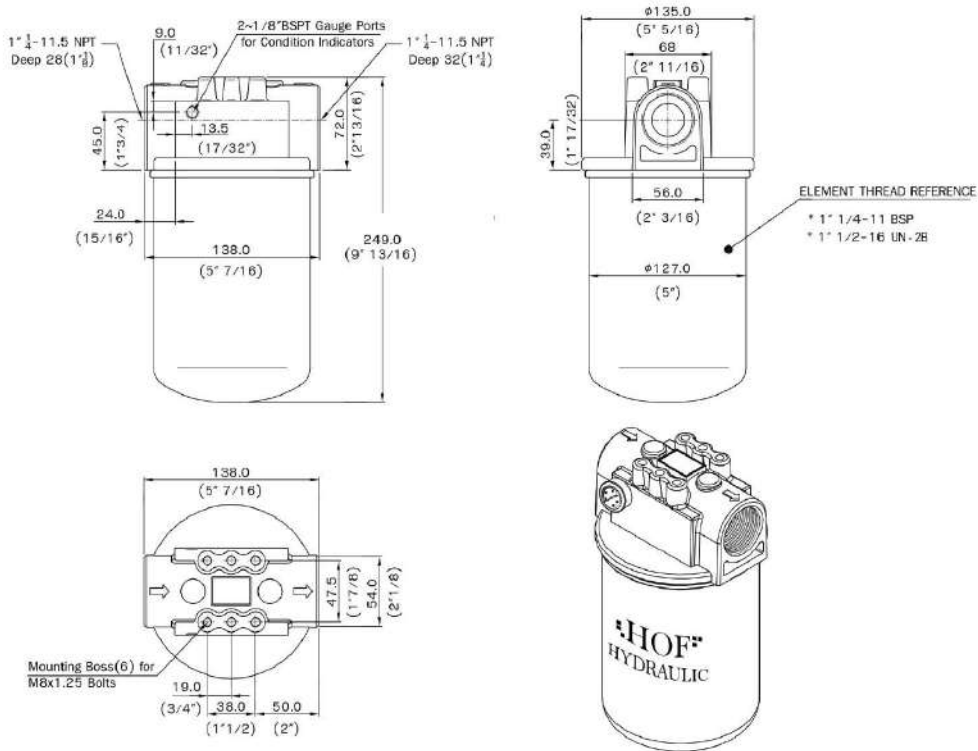
3. Number of element
S - Tank - top Thread Type.
D - Tank - top, twin element (mounted end to end)

4. Available options
P - Indicator (Pressure) gauge, 25 psi by-pass spring for return line installations.
V - Indicator (Vacuum) gauge, 5 psi by-pass spring for suction line installations.

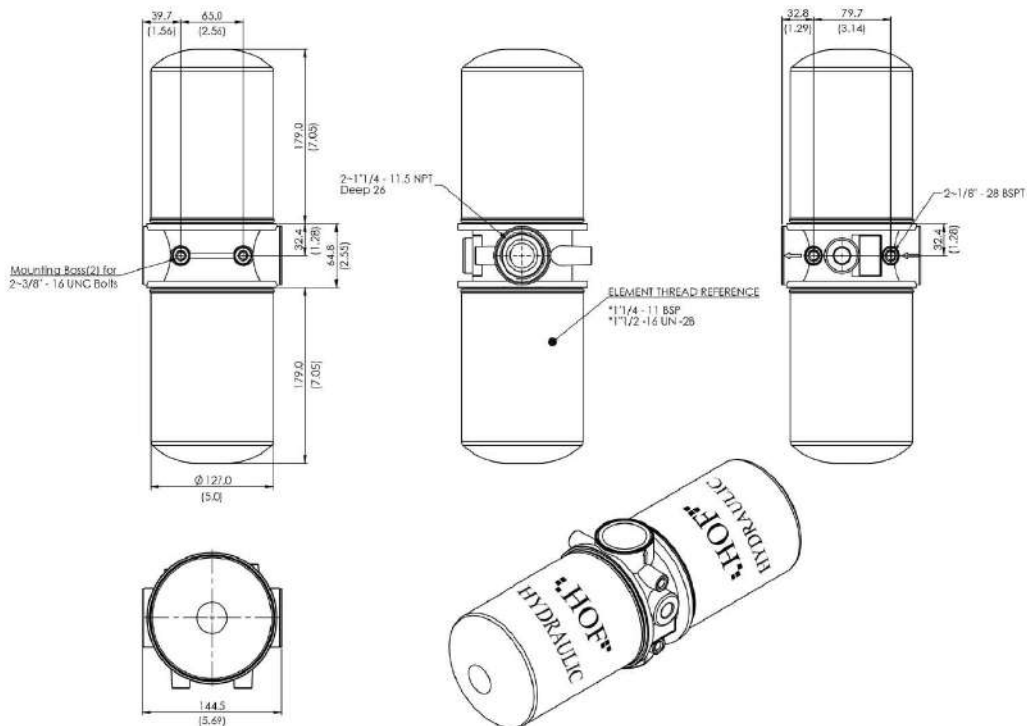
Return Line Filter HFR-10

Installation Dimension mm (inch) : HFR Series Spin-On Return Line Filter

Single Element



Double Elements



Return Line Filter

HFR-10

Parts can be ordered separately :

Ordering Code : HFR Series *Spin-On Filter Head*

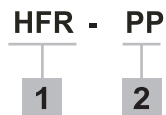


1. Model : HRF

2. Available options

- PHPS - Only head with pressure gauge for single elements.
- PHVS - Only head with vacuum gauge for single elements.
- PHPD - Only head with pressure gauge for twin elements.
- PHVD - Only head with vacuum gauge for twin elements.
- PH25S - Only head no gauge with 25 psi by-pass spring for single elements.
- PH5S - Only head no gauge with 5 psi by-pass spring for single elements.
- PH25D - Only head no gauge with 25 psi by-pass spring for twin elements.
- PH5D - Only head no gauge with 5 psi by-pass spring for twin elements.

Ordering Code : HFR Series *Visual Indicator*



1. Model : HRF

2. Available options

- PP - Pressure gauge only.
- PV - Vacuum gauge only.



1. Model : HRF

2. Size

- P10144
- P25160

Return Line Filter HFR-10

Installation Dimension mm (inch)



Series	Maximum Pressure psi (bar)	Thread (BSP)	Ø D mm. (in)	L mm. (in)	Filteration Micron	Flow lpm.
HFR - P10144	100 (6)	1 ¼"	127 (5.00)	178 (7.00)	10	144
HFR - P25160					25	160

Level and Temperature Gauge HL-76/ HL-127

Features and Handling

• HL-76, HL-127 is a level and temperature gauge for mounting on side of oil tank, fuel reservoirs, central lubrication unit, and etc. It is made of Aluminum casting, oil-resistant rubber gaskets, and plastic circular gauges for large sight area.



Ordering Code

HL - 76
1 2

1. Model : HL

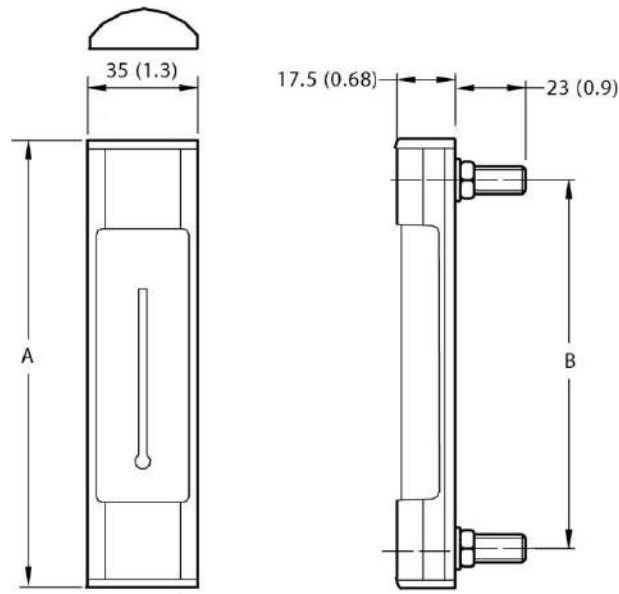
2. Mounting (mm)

76 - Small size
127 - Large size

Level and Temperature Gauge

HL-76/ HL-127

Installation Dimension mm (inch)



Model	A	B
HL-76	103 (4.05)	76 (3.0)
HL-127	154 (6.06)	127 (5.0)

HOF Hydraulic represented by

Flowlution Co.,Ltd.

26/48 Moo4 Suksavadh Road, Jomthong, 10150 Bangkok, Thailand
Tel: +662 877 3223 Fax: +662 877 3373 info@flowlution.com

HOF Corindus Co.,Ltd. (Thailand only)

891 Rama3 Road, Bangpongpan, Yannawa, 10120 Bangkok
Tel: 02 284 1100 Fax: 02 683 4414 info@hofcorindus.co.th
www.hofcorindus.co.th